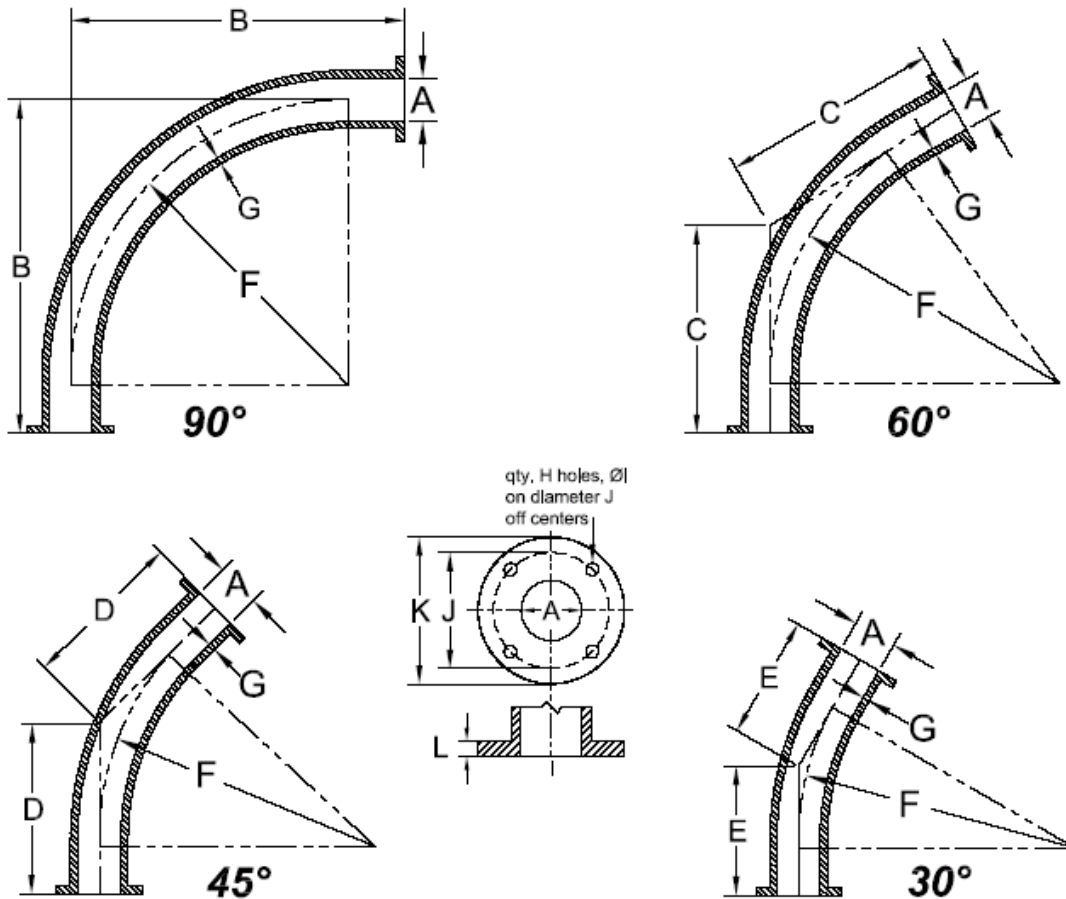


Large Radius *Ni-Hard* Bends



Dimensions are approximate and subject to change without notice.

I.D.	90°	60°	45°	30°	radius	wall	Flange Dimensions (ASA150)					90°	60°	45°	30°
	A	B	C	D			E	F	G	H	I	J	K	L	weight (approx) KG
2"	381	254	203	159	305	13	4	19	121	152	22	16	14	11	7
3"	533	340	254	200	457	16	4	19	152	191	20	39	29	26	22
4"	686	429	330	241	610	16	8	19	191	229	20	58	46	41	30
5"	838	518	381	279	762	18	8	22	216	260	25	99	75	54	36
6"	991	603	457	321	914	18	8	22	241	285	22	135	102	84	55
8"	1295	781	584	403	1219	19	8	22	299	343	29	234	170	138	95
10"	1600	956	711	483	1524	20	12	25	362	406	25	342	236	183	129

BUSH & WILTON LTD

6, Millennium Place
Tiverton Business Park
Tiverton

Devon EX16 6SB

Tel: +44 (0) 1884 242233 Fax: +44 (0) 1884 252555
sales@bushandwilton.com <http://www.bushandwilton.com>